

# Market Trend Report

Presented by: Cody Willner  
RE/MAX Equity Group

[cwillner@equitygroup.com](mailto:cwillner@equitygroup.com)

1300 NE 48th Ave. Suite 500

12/31/2011 4:50:25 PM

## Search Criteria

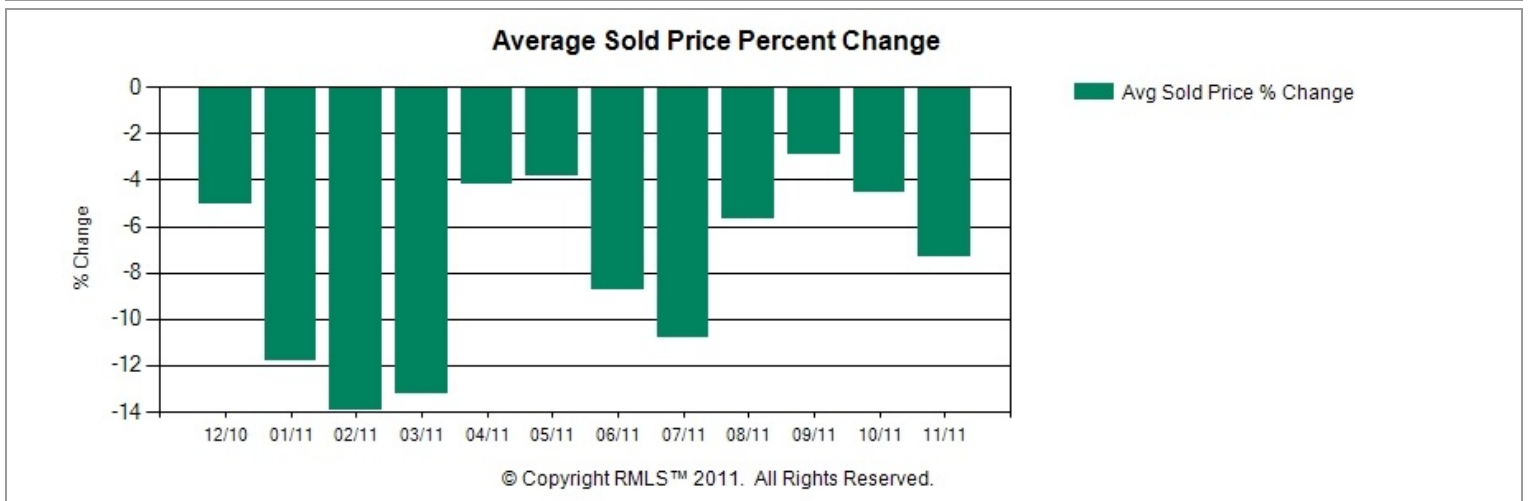
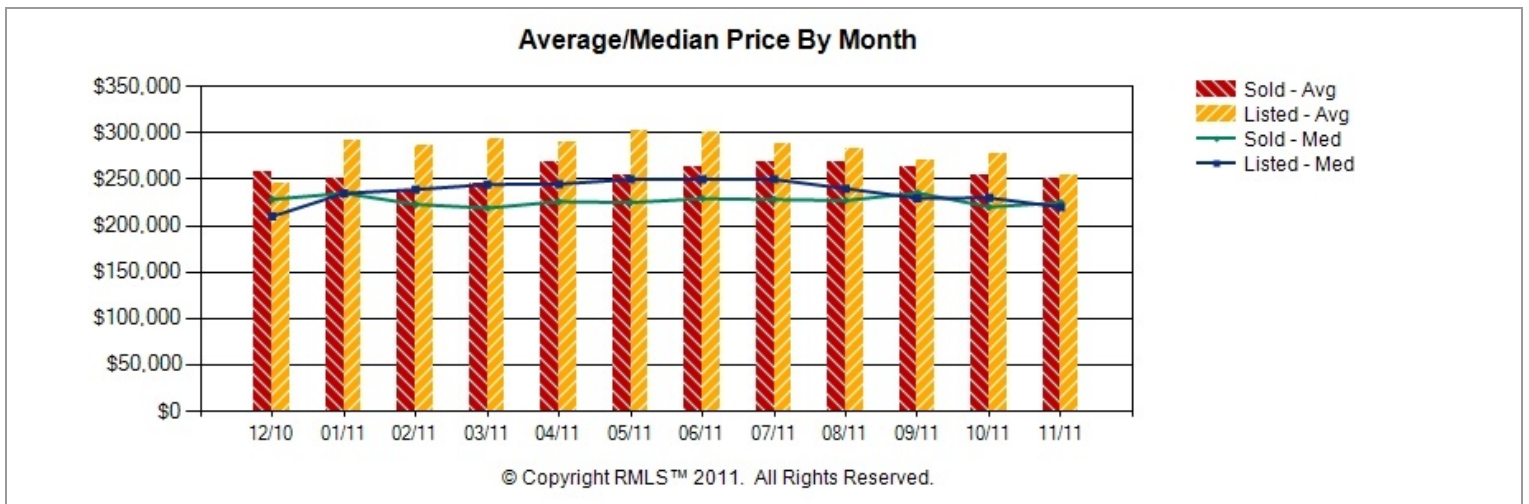
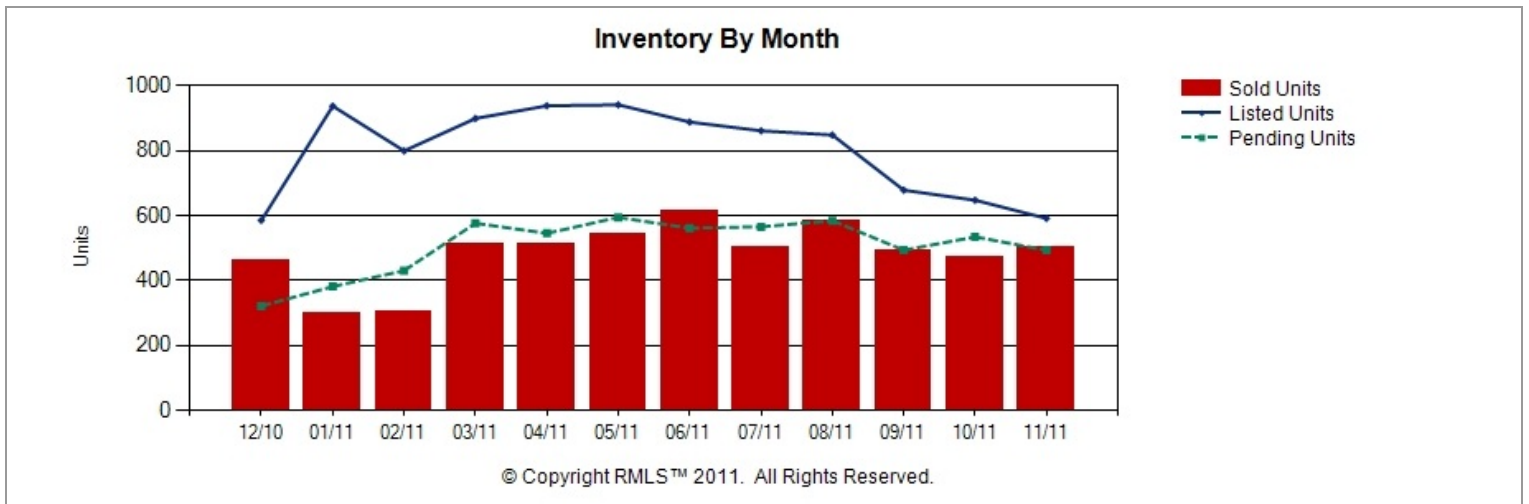
Months Back = 12 County = Washington Property Category = RESIDENTIAL Property Type = ATTACHD, CONDO, DETACHD, FARM

## Report Summary

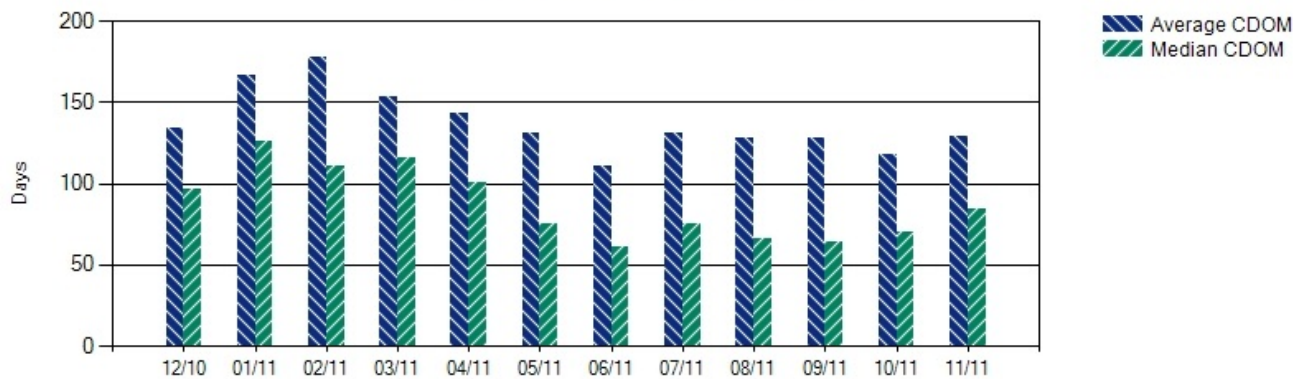
Total Listed:	9,612	Minimum Sold Price:	\$15,000	Total Active Units:	2,309
Total Sold:	5,809	Average Sold Price:	\$258,215	Units Sold/Months Back:	484.1
		Median Sold Price:	\$225,000	Months of Inventory:	4.8
		Maximum Sold Price:	\$2,950,000		

Note: Unlisted Solds are not included in this report.

## Report Graphs



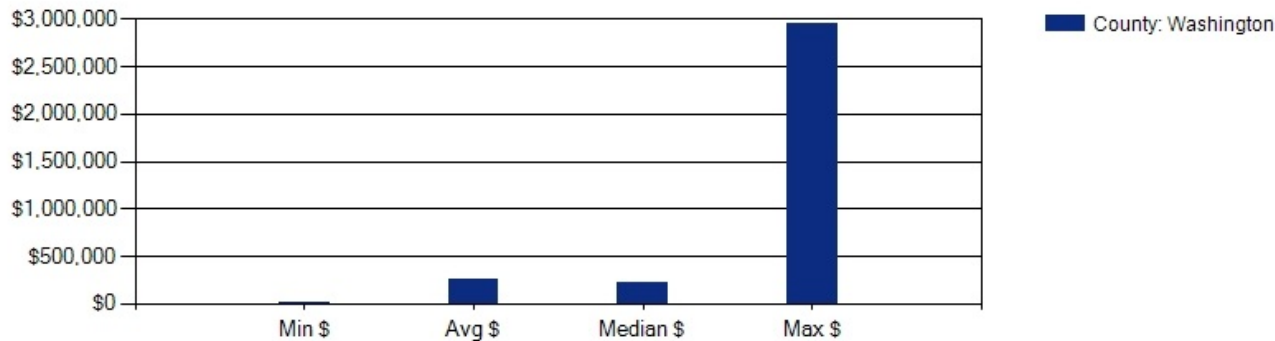
### Average/Median CDOM By Month



© Copyright RMLS™ 2011. All Rights Reserved.

### Market Stats

12 Months Back - Totals



© Copyright RMLS™ 2011. All Rights Reserved.

## Report Data

Date		Listed				Pend	Sold							DOM		CDOM	
Y	M	Units	Volume	Avg	Med	Units	Units	Volume	Min	Avg	%	Med	Max	Avg	Med	Avg	Med
2010	Dec	585	\$143,078,679	\$244,578	\$210,000	321	464	\$119,971,655	\$42,500	\$258,559	-5.04	\$228,500	\$1,200,000	88	66	134	97
2011	Jan	937	\$273,047,636	\$291,406	\$234,900	381	297	\$74,487,827	\$40,275	\$250,800	-11.83	\$235,000	\$1,175,000	110	77	167	126
2011	Feb	799	\$228,716,798	\$286,253	\$239,000	430	305	\$72,688,728	\$46,500	\$238,323	-13.97	\$223,000	\$717,500	99	75	178	111
2011	Mar	899	\$264,035,935	\$293,699	\$244,500	576	515	\$126,579,628	\$49,350	\$245,785	-13.26	\$219,000	\$1,150,000	96	73	153	116
2011	Apr	938	\$271,940,837	\$289,915	\$244,950	545	511	\$137,458,696	\$47,000	\$268,999	-4.18	\$226,000	\$2,950,000	89	59	143	101
2011	May	941	\$284,333,333	\$302,160	\$249,999	594	545	\$138,630,136	\$15,000	\$254,367	-3.83	\$224,990	\$1,027,000	89	56	131	75
2011	Jun	888	\$267,564,629	\$301,311	\$249,900	561	616	\$162,411,847	\$35,000	\$263,655	-8.77	\$229,250	\$1,337,500	82	48	111	61
2011	Jul	861	\$248,534,891	\$288,658	\$249,900	565	504	\$134,945,398	\$48,000	\$267,748	-10.79	\$228,250	\$2,025,000	87	56	131	75
2011	Aug	848	\$240,101,004	\$283,137	\$239,970	584	584	\$156,394,895	\$41,000	\$267,799	-5.70	\$227,250	\$1,495,000	90	51	128	66
2011	Sep	678	\$183,331,865	\$270,400	\$229,700	493	494	\$130,299,303	\$39,000	\$263,763	-2.89	\$235,380	\$1,495,000	89	52	128	64
2011	Oct	647	\$179,178,982	\$276,938	\$230,000	534	472	\$120,066,240	\$39,900	\$254,377	-4.54	\$220,250	\$969,900	83	49	118	70
2011	Nov	591	\$150,607,751	\$254,835	\$219,990	493	502	\$126,037,642	\$45,000	\$251,071	-7.29	\$225,000	\$1,299,150	92	63	129	84
<b>Summary:</b>		9612	\$2,734,472,340	\$284,485	\$239,900	6077	5809	\$1,499,971,995	\$15,000	\$258,215	-7.35	\$225,000	\$2,950,000	90	59	135	85

© RMLS™ 2011. ALL RIGHTS RESERVED - INFORMATION NOT GUARANTEED AND SHOULD BE VERIFIED.